

Overview of the Application Process



The
Medic Portal

www.themedicportal.com

The Royal Society of Medicine

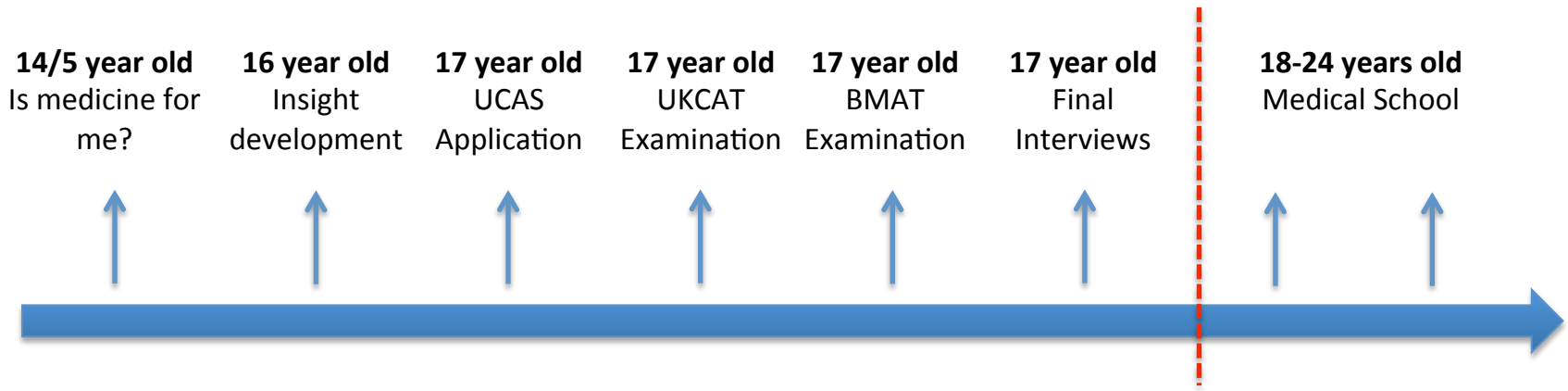


The ROYAL
SOCIETY *of*
MEDICINE

In official partnership with the leading authority in
medical education



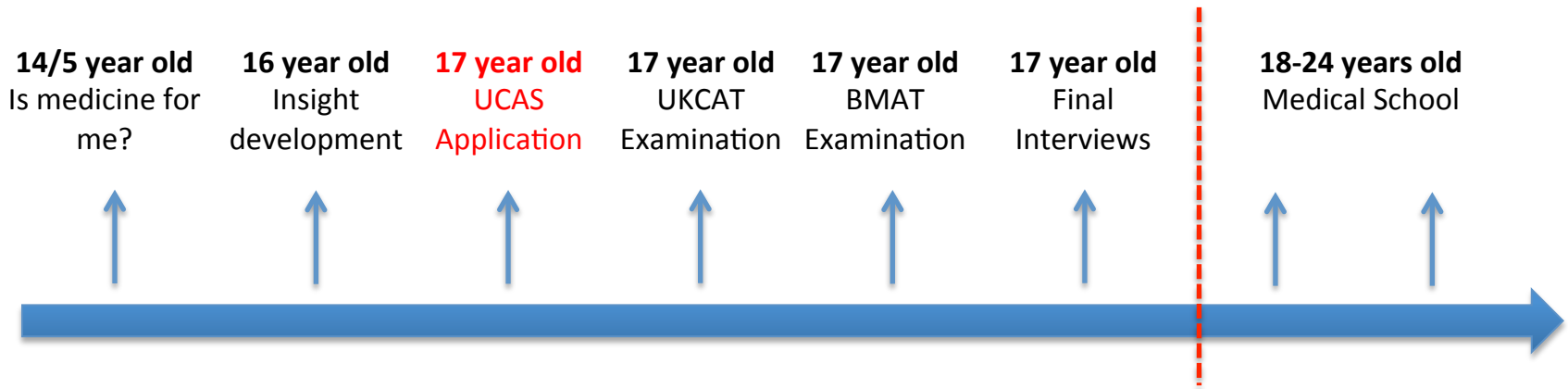
The Journey into Medicine



- The 4 key check points:



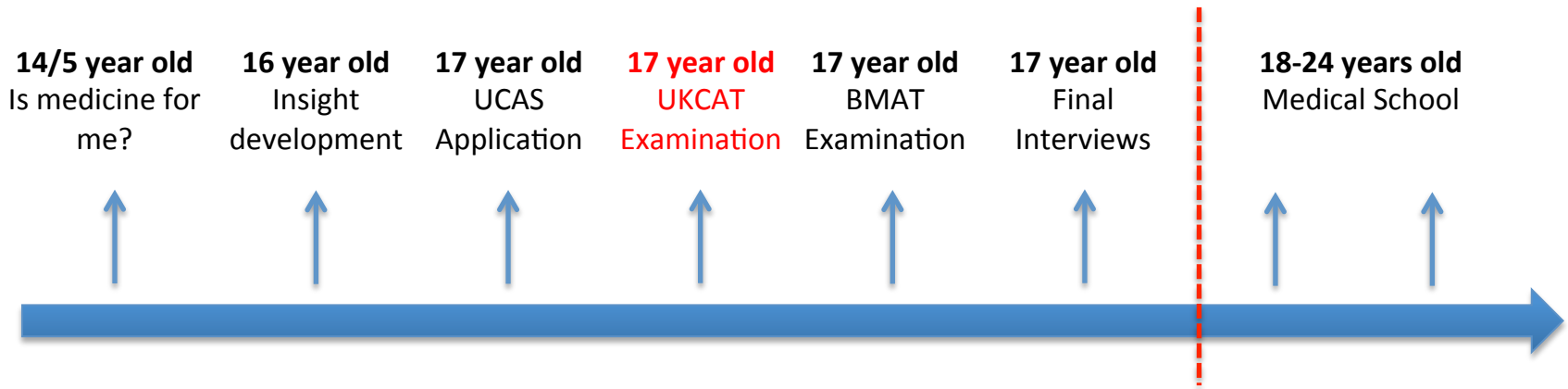
The Journey into Medicine



- The 4 key check points:
 - UCAS Application



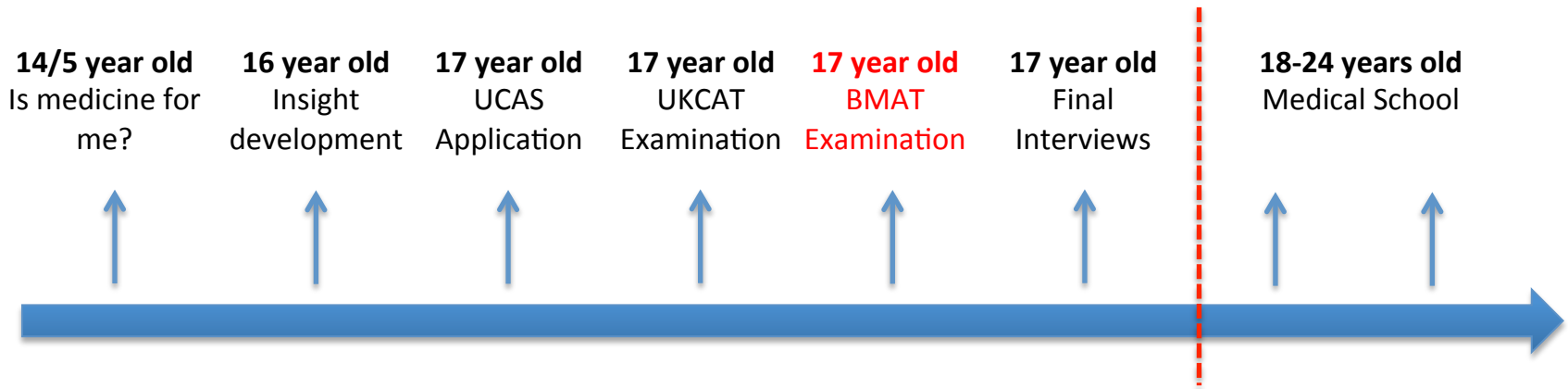
The Journey into Medicine



- The 4 key check points:
 - UCAS Application
 - UKCAT



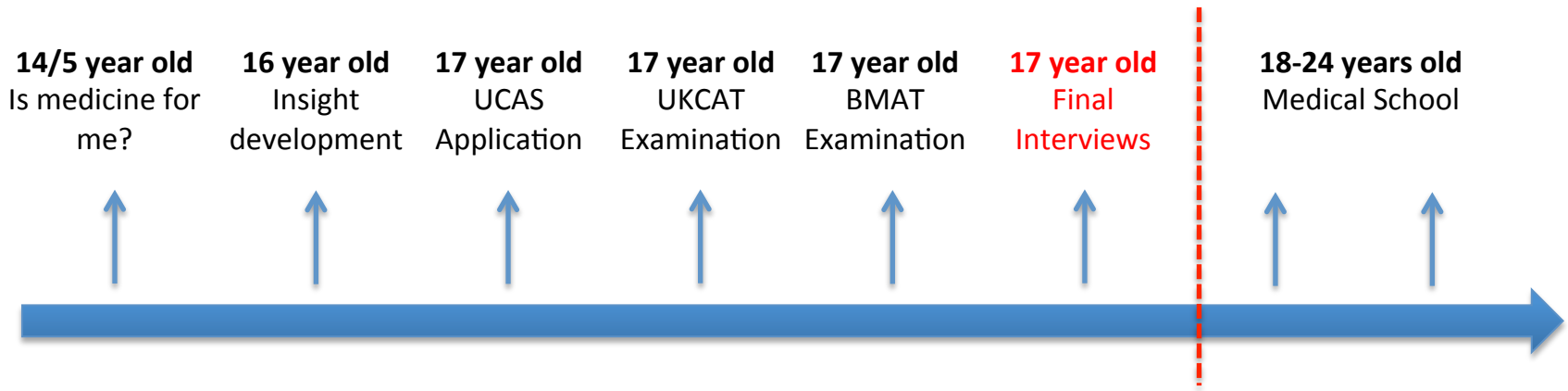
The Journey into Medicine



- The 4 key check points:
 - UCAS Application
 - UKCAT
 - BMAT



The Journey into Medicine



- The 4 key check points:
 - UCAS Application
 - UKCAT
 - BMAT
 - Interview



UCAS Application

- A competitive process
 - Average application ratio in 2015 was 10:1*
- Three key questions:
 - How to choose a medical school?
 - How to write an excellent personal statement?
 - How important is your reference?



Choosing a Medical School

- Select up to 4 medical schools
 - Oxford **or** Cambridge (not both)
 - Use your UKCAT score to your favour
- One 'alternative' course
 - Medicine or science related
 - Some allow you to submit a separate personal statement



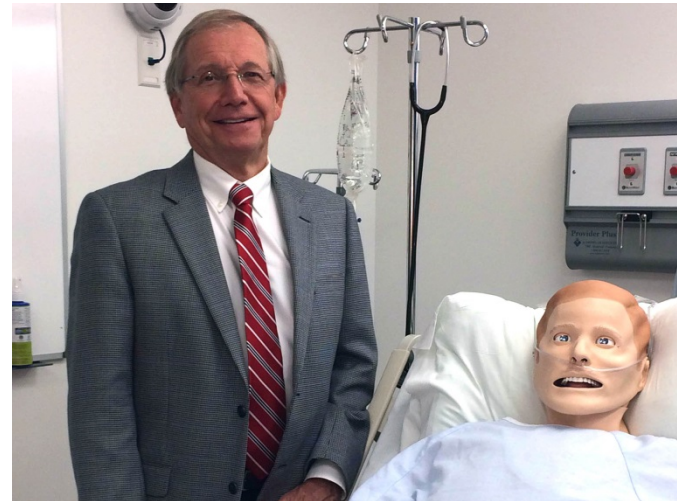
Course Considerations

- Location
- Course structure
- Course length



Course Structure

- Three types of course structure:
 - Traditional
 - Integrated
 - Problem Based Learning (PBL)
- } Intercalated BSc



Course Length

- Undergraduate MBBS
 - 5 years
- Undergraduate MBBS with intercalated BSc
 - 6 years
- Postgraduate MBBS
 - 4 years



Knowledge of Medical School

School table

Lorem ipsum dolor sit amet, consectetur adipisicing elit. Dignissimos, debitis voluptatibus, ipsam omnis voluptas quod optio modi magnam inventore, reprehenderit corrupti fugiat ipsa delectus rerum culpa tenetur vel illum totam vitae! Error iure quae, accusantium reiciendis vero earum eum adipisci voluptatibus sunt corporis repellendus ipsam magni provident, commodi eius praesentium!

Compare

	Aberdeen (University of), School of Medicine	Aberdeen (University of), School of Medicine	Aberdeen (University of), School of Medicine	Aberdeen (University of), School of Medicine
Phone (Medical School Direct Line)	Phone (Medical School Direct Line)	Phone (Medical School Direct Line)	Phone (Medical School Direct Line)	Phone (Medical School Direct Line)
E-mail (Medical School)	Medical Admissions: medadm@abdn.ac.uk	Medical Admissions: medadm@abdn.ac.uk	Medical Admissions: medadm@abdn.ac.uk	Medical Admissions: medadm@abdn.ac.uk
Course Structure (Traditional / Integrated / PBL)	Integrated	Integrated	Integrated	Integrated
Applications pa	2764	2764	2764	2764
Accepted pa	166	166	166	166
Success Ratio	0.06	0.06	0.06	0.06
Graduate Entry Available (Y/N)	Y	Y	Y	Y
Foundation / Access Courses Available (Y/N)	N	N	N	N
Intercalated BSc (Compulsory/ Selective/ None)	Selective	Selective	Selective	Selective

How to stand out?

- Have spoken to current students
- Have a knowledge of the teaching hospitals
- Know a little about some of the research opportunities
- Can clearly articulate why their course structure is best suited



Deciding on Medicine

Work Experience

Choosing a Medical School

Advice From Tutors

School by School

Integrated

PBL

Oxbridge

Entry Requirements

Competition Ratios

Foundation Programmes

UCAS

Personal Statement

UKCAT

BMAT

Medical School Interviews

Graduate Entry Overview

Didn't Get In?

The Personal Statement



- Your first point of interaction with the admissions team
- 4000 characters
- Often a core component of interviews
- Must stand out



Spelling and grammar must be **perfect!**



The Personal Statement

- Structure is key:
 - Writing about the course
 - Work experience
 - Skills and achievements
 - Hobbies and interests
 - Future plans



Writing about the Course

Two essential areas to cover include:

1. Why are **you** applying for medicine?
2. Why are you suitable to study medicine?



Skills and Achievements

- Ensure you demonstrate you possess the key skills required to be a doctor:

KEY SKILLS

- Communication skills
- Leadership
- Empathy
- Teamwork
- Organisation
- Prioritisation
- Working under pressure
- Know when to ask for help

EXAMPLES

- Duke of Edinburgh Award
- Young Enterprise Schemes
- Proud achievements
- Positions of responsibility
- First aid courses
- Prizes and awards
- Extra curricular activities



Always think – what is your USP?



How to Phrase Your Examples

'The strongest applicants are those who can link their extra-curricular activities to their proposed course of study.'

Warwick Medical School Admissions Tutor

I captained my school first XI football team in my final year at school.

Vs.

Whilst captaining my school first XI football team, I developed my communication skills with my team mates and teachers from other schools, and organised our international tour to France. I enhanced my ability to work within a team and prioritise my blend of school work and sports practice – demonstrated by the fact that in the run up to my examinations we won the regional cup.



Work Experience

- Essential component
- Various settings:
 - Hospital setting
 - GP
 - International
 - First aid
 - Volunteering
 - Charity work
- Start a portfolio
- Reflect on cases you saw – what did you learn?



How to Reflect

1. Write up experience and learning points straight away
2. Do wider reading and research around it
3. Revisit after a couple of weeks and supplement
4. Use the highlights in your Personal Statement



Keep a Reflective Diary!

This can be transferred straight into your Personal Statement for refinement

- ✓ Improves accuracy
- ✓ Provides immediacy
- ✓ Increases efficiency
- ✓ Decreases workload

Can be done for free on The Medic Portal's new website



My Dashboard

Jane's Profile [Edit profile](#)

Well done Jane, your profile is 75% complete

Alquam submod felle ut punis auctor, eget tristique susque fringilla. Maecenas eget congue leo, a finibus arcu. Nunc dapibus mi sem, facilisis dictum tellus pharetra ac.

UKCAT

Verbal Reasoning

Quantitative Reasoning

Abstract Reasoning

Decision Analysis

Situational Judgement

Interview Practice

Common Questions 2

Work Experience Awards Achievements

Manchester Royal Infirmary

Position Assistant Radiologist

Duration (8 weeks)

Contact Dr Adam Harshaw

Summary Lorem ipsum dolor sit amet, ipsum rebum sceler sit. In. Ne civibus necesse fessic in ne completo illos Ephesum, carboim deo apprehendi! Apollonius situs sed te finis pusillum. Nupharum cui completo illos Ephesum, carboim deo apprehendi! Apollonius situs sed te finis pusillum. Nupharum cui ubi confudi! huc apud senex lecturis ut. cecus. Amen

[See all work experience](#)

UKCAT Key Dates

Registration opens 30th April 2015

Final test date Worcestershire, Bromsgrove School

Registration closes 09:00 to 18:00

Last test date £175

UCAS submission deadline £175

Master BMAT

Comprehensive BMAT course

Online practice tests

Comprehensive BMAT course

Online practice tests



The Reference

- Many universities place significant weight on your reference
- You need to choose a teacher who knows you well and will write an excellent reference
- It is **your** responsibility to tell your teacher everything you've done to ensure they know what to write! Be proactive!



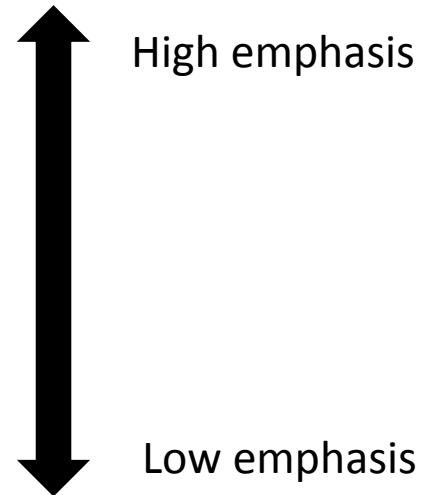
The UKCAT

- UK Clinical Aptitude Test
- Runs between 3rd July and 3rd October 2017
- Required by nearly all medical schools
- 2 hour computerised test
- Tests aptitude in 5 sections:
 - Verbal reasoning
 - Quantitative reasoning
 - Abstract reasoning
 - Decision analysis
 - Situational judgement test

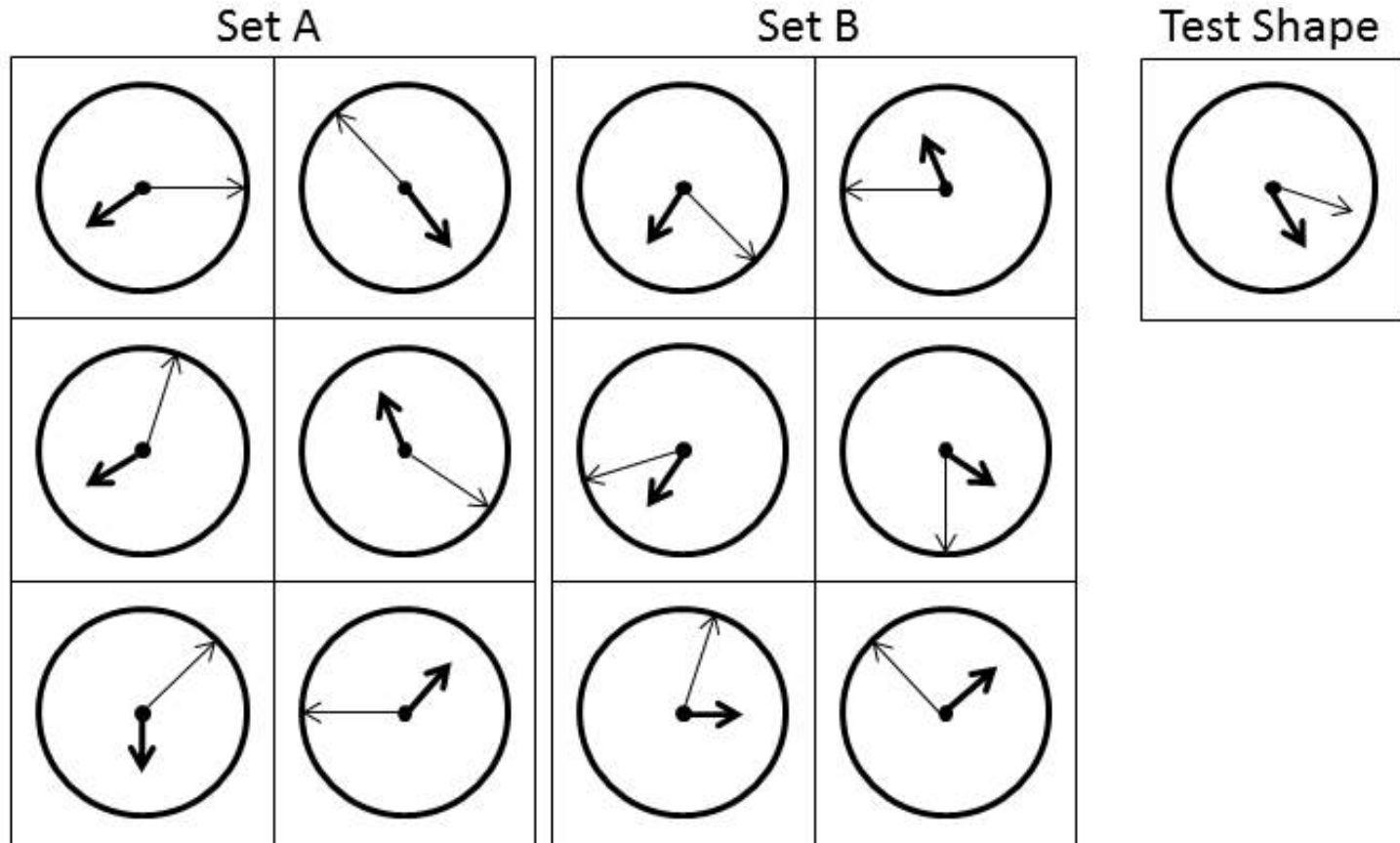


Uses of the UKCAT

- Different medical schools have different policies, including:
 - Ranked by UKCAT score
 - Points allocation for quartiles
 - Minimum cut-off
 - Only used in borderline cases
 - Not at all



Abstract Reasoning



- A. Set A
- B. Set B
- C. Neither





Quantitative Reasoning

Calculator

Quantitative Reasoning Scenario

A school has a drinking water fountain consisting of a cylindrical container, which can store 20 litres of water, and a rectangular base. The container is 80cm tall and has a radius of 20cm.

Question 2

The tap allows water to flow out at a rate of 0.4 litres per minute. How many 500ml bottles can you fill in 5 minutes?

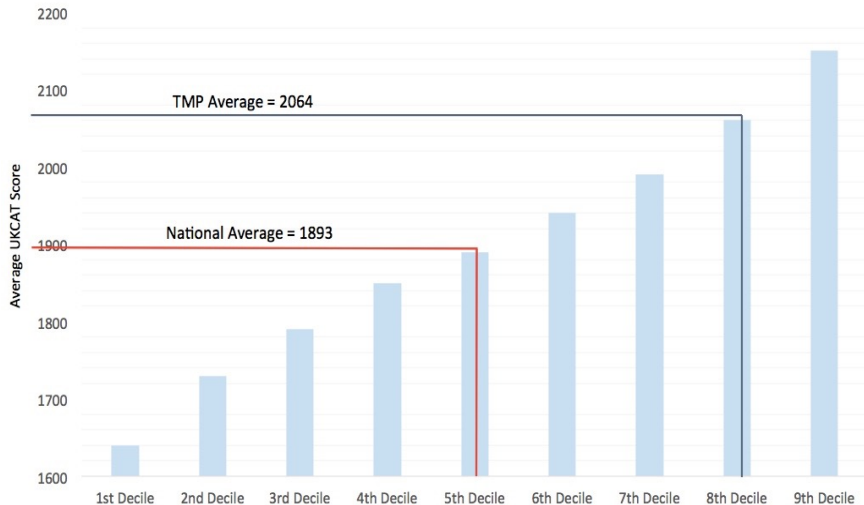
- A 4 bottles
- B 5 bottles
- C 6 bottles
- D 7 bottles
- E 8 bottles

End Exam

Next

In House Courses At Your School

- Delivered over **100+ courses** last summer at schools
- Taught 10% of all UKCAT takers globally



We were hugely impressed with the UKCAT training provided by you for our medical applicants and the scores the students went on to achieve were undoubtedly improved as a result.

Cheltenham Ladies' College



The BMAT

- Bio-Medical Admissions Test
- Sat on 9th September & 2nd November 2017
- Required by 7 medical schools:
 - Oxford
 - Cambridge
 - UCL
 - Imperial
 - Brighton & Sussex
 - Leeds
 - Lancaster
- 2 hour per and paper test
- Combines aptitude with knowledge:
 - Section 1: Aptitude
 - Section 2: Scientific knowledge
 - Section 3: Essay



Previous Essay Question

The scientist is not someone who gives the right answers but one who asks the right questions

Explain what this statement means.

Argue to the contrary that the right answers are more important than the right questions.

To what extent do you agree that the right questions must be asked before science can progress?



The Interview

- The final hurdle
- Your only opportunity to meet first face to face
- Preparation and practice are essential



Types of Interview

- There are three styles of interview:
 - Traditional Interviews
 - Multiple Mini Interviews (MMI)
 - Oxbridge



Traditional Interviews

- Used by approximately half of universities
- Panels range from 2 to 5 members
 - Admissions tutor
 - Doctors / lecturers
 - Medical student
 - Observer / lay person
- Topics assessed vary between universities
- Part of the interview likely to focus on personal statement



Common Interview Topics

- Background and motivation for studying medicine
- Knowledge of the medical school
- Depth and breadth of interest in medicine
- Empathy
- Team working
- Personal insight
- Hot topics
- Work experience
- Ethics
- Creativity and imagination



Multiple Mini Interviews

- Used by nearly half of universities – and growing!
- Recommended by many reviews to replace traditional interviews
- Consist of circuits of 6 to 8 stations, each assessing a different set of skills through short interviews, activities and tasks.
- In addition to common interview topics also assess:
 - Communication skills
 - Empathy
 - Working under pressure
 - Logic, reasoning and problem solving



Oxbridge Interviews

- Variation on traditional interviews
- Carried out at individual colleges
- In addition to common topics, focus heavily on:
 - Science based questions
 - Knowledge of research and trials
 - Linking scientific knowledge to abstract questions
 - Lateral thinking



Discriminator Topics

- Ethics
 - Increasingly common in traditional and MMI
 - Assess your ability to approach issues with an open mind, considering all sides
 - Demonstrate reaching balanced conclusions
- NHS 'Hot Topics'
 - Assesses your interest and commitment to medicine
 - Are you aware of current issues in medicine?



A school of goldfish swimming in the background. The fish are of various sizes and are scattered across the white background, with some appearing larger and more detailed than others. They are all facing in different directions, creating a sense of movement.

Always ask yourself...

How Can I Really Stand Out?



The Medic Portal Support

- 100+ pages of free up to date information
- On site teaching internationally on all aspects of the process
- International Conferences
- Online tutoring
- Personal Statement Review Service
- Online Question Banks
- Online mock interviews



Thank You

Website: www.themedicportal.com

Blog: www.themedicportal.com/blog

YouTube: www.youtube.com/themedicportal

Twitter: [@themedicportal](https://twitter.com/themedicportal)

Email: info@themedicportal.com

